

SUNCOAST CAMERA CLUB

CLEARWATER • FLORIDA



CLICK! NOTES



FLORIDA CAMERA CLUB COUNCIL

Vol. L, No. 12, December, 2010. Founded 1960.

www.suncoastcameraclub.org • Member of the Photographic Society of America and the Florida Camera Club Council

Dues are due

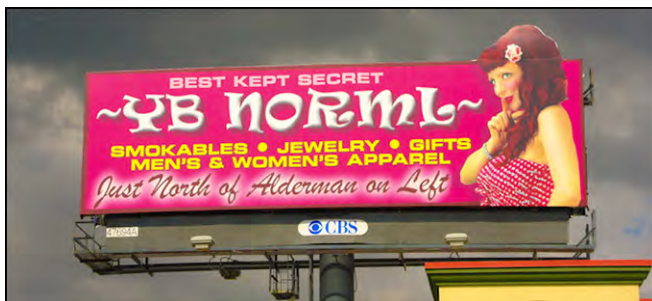
Dues for 2011 are payable now, so be sure to submit them in a timely manner so as to be included in the 2011 Yearbook. See Club Treasurer Jeff Gentry to pay.

Annual awards banquet set for Feb. 5

The Countryside Country Club will be the site of our 2011 Awards Banquet on Saturday, Feb. 5, 2011. The Countryside Country Club is located at 3001 Countryside Blvd., Clearwater, Fla. You may bring a guest.

Awards for prints and E-I images will be presented, as well as SCC Star awards. Member skill level promotions and the award for the Most Improved Photographer will also be announced. As usual, club members' award-winning images from the past year will be on display.

Dinner will be your choice of Chicken Marsala, Bronzed Tilapia with Fruit Salsa, Roast Beef, or a Vegetarian Plate. House salads with Balsamic or Ranch Dressing, warm rolls and butter and the Chef's Chocolate Desert, plus coffee, tea and water will also be served. Cost per attendee is \$25 as in the past. Attendees should indicate their dinner entrée selection with their payment. A cash bar will open at 6 p.m. Dinner will be served at 7 p.m.



IT'S ALL A MATTER OF TEAMWORK. The photograph of the woman on this billboard is the result of an interesting collaborative effort by Mary Burke and Len Lapka at the studio of Jim Goins. Len had the subject strike a pose suggested by a photo Mary took of another model. The lady pictured here is Julie Osteen, owner of "YB Norml" in Palm Harbor. This billboard is located on U.S. 19, just north of the Olive Garden in Palm Harbor.

Club Calendar

Thurs., Dec. 9, Hospice, Roosevelt Campus, 5771 Roosevelt Blvd., Clearwater, Room 126C, 7 p.m.

General meeting with print and E-I evaluations. Print entries should be signed in no later than 6:45 p.m. Assigned Subject: **Shadows** (See Yearbook for details). **(Note day change from Tuesday to Thursday)**

Tues., Dec. 14, Summit Bldg., Geneva Room, 7 p.m.

Suncoast Camera Club Executive Committee board meeting. All club members are welcome to attend. The address is 13575 58th St. N., Clearwater (Mythos Greek Taverna Building).

Tues., Dec. 21, Hospice, Roosevelt Campus, 5771 Roosevelt Blvd., Clearwater, Rooms 126C & D, 7 p.m.

Program Night: Photo Mini-Essays. A pot-luck dinner with dessert is also on the agenda. All members can enter a mini-essay. Content should be informative and/or entertaining on a subject of your choice. The presentation should last between three and five minutes. Examples are travel, nature, photojournalism, etc. Participants each receive 10 points for their efforts. Contact Jim Goins for details.

Tues., Jan. 4, Safety Harbor Library, 101 2nd St. N., Safety Harbor, Room B, 7 p.m.

General meeting with print and E-I evaluations. Print entries should be signed in no later than 6:45 p.m. Assigned Subject: **Open** (No assigned subject).

Tues., Jan. 18, Hospice, Roosevelt Campus, 5771 Roosevelt Blvd., Clearwater, Room 126C, 7 p.m.

Suncoast Camera Club Year-End Competition:

Print entries must be turned in no later than the Jan. 4 meeting. Digital (EI) entries must be submitted online no later than Jan. 11. Make sure you're familiar with the rules so that you can submit your entries properly. Any award or HM winning image from 2010 is eligible. As usual, non-club-affiliated photo experts will serve as judges. Contact Competition V.P. George McKenna for more information.

Tues., Feb. 1, Safety Harbor Library, 101 2nd St. N., Safety Harbor, Room B, 7 p.m.

Program Night: TBA

Sat., Feb. 5, Annual Awards Banquet

Make plans to attend the annual Suncoast Camera Club Awards Banquet, Saturday, Feb. 5 at the Countryside Country Club. See story at left for details.

See other side for results of the latest monthly evaluations.

Suncoast CC November 2010 Evaluation Results

Electronic Images

CLASS B GENERAL (1/2 Entries)
HM J. Gentry Library at Ephesus

CLASS B ASSIGNED (2/4 Entries)
AW J. Gentry Monastery in the Clouds
HM J. Gentry Pomegranate Juice Vendor

CLASS A GENERAL (4/9 Entries)
HM J. Devine Blue Ridge Parkway
HM R. Miller A RIVER OF TULIPS
HM R. Miller SKIPPY
HM M. Zielinski Vain Lightning

CLASS A ASSIGNED (5/9 Entries)
HM P. Carlson Sedona
HM J. Devine Geyser Viewing
HM M. Kinney On Safari 2
HM R. Miller Misty-morning
HM M. Zielinski Old City Gate

CLASS AA GENERAL (19/23 Entries)
AW M. Burke Dreamy
AW F. Crommelin Old Stove
AW B. Kramer Bald Eagle
AW B. Kramer Screech-Owl
AW L. Lynch Sunshine Skyway Sunrise
AW M. Muskovac Union Station
AW N. Muskovac Sarah in Red
AW R. Parry headshot
AW T. Strong Hanging On
HM M. Burke Caught in Ripples
HM F. Crommelin Gray Beard
HM J. Gentry Athens
HM D. Hart Jellyfish Fantasy
HM J. Mahoney Jenny with Flowers
HM G. McKenna Ready For Next Customer
HM G. McKenna Underwater Hippo
HM M. McKenna Pallid Monarch
HM D. Nichols Art in Nature
HM T. Strong Boardwalk Sunset

CLASS AA ASSIGNED (14/25 Entries)
AW B. Kramer Cape-Cod-Highland
AW L. Lynch Morning Frost, Cades Cove
AW J. Mahoney Navajo Bridge
AW D. Nichols A Day At The Beach
AW E. Rosengren Hole-in-wall--Antelope-Canyon
HM L. Lynch Bud Ogles Cabin
HM M. McKenna Jones, Maine
HM M. McKenna Nantucket Windmill
HM M. Muskovac Storm over Washington Monument
HM N. Muskovac Pompei-Ruins
HM N. Muskovac Skyline Arch
HM D. Nichols Colorado
HM R. Parry oriental musician
HM E. Rosengren Through-the-Rapids

Electronic Imaging Evaluation Statistics

Class	Entries	AWs	HMs
B	6	16%	33%
A	18	0%	50%
AA	48	29%	39%
Total	72	20%	41%

Prints

CLASS A MONO GENERAL (0/1 Entries)

CLASS A MONO ASSIGNED (1/2 Entries)
HM J. Devine Geyser Steam Yellowstone

CLASS AA MONO GENERAL (4/4 Entries)
AW F. Crommelin Nightmare
AW B. Kramer Red Fox Alert
HM F. Crommelin Bald Eagle
HM B. Kramer Flowstone

CLASS AA MONO ASSIGNED (1/2 Entries)
HM B. Kramer Wind Mill

CLASS B COLOR ASSIGNED (2/2 Entries)
AW J. Gentry Istanbul Docks at Dusk
HM J. Gentry Temple of Poseidon

CLASS A COLOR GENERAL (4/5 Entries)
AW P. Carlson Heron at Sunset
HM P. Carlson Osprey with Sheepshead
HM J. Devine Iguana
HM D. Miller Shavings

CLASS A COLOR ASSIGNED (5/6 Entries)
AW J. Gentry Parthenon at Dusk
AW D. Miller Medieval Turret
HM B. Banull Leonardo
HM J. Devine El Cap Yellowstone
HM J. Devine Yellowstone Lower Falls

CLASS AA COLOR GENERAL (7/8 Entries)
AW F. Crommelin Summer Breeze
AW D. Hutchinson Red Fox - Winter Coat
AW B. Kramer Great Blue Discussion
AW B. Kramer Pals
AW G. McKenna Sandhill Crane
AW M. McKenna Ironman
HM F. Crommelin Barn at Chester NY

CLASS AA COLOR ASSIGNED (6/6 Entries)
AW D. Hutchinson St. Basil's Cathedral - Moscow
AW D. Hutchinson St. Elmo - Colorado Ghost Town
AW G. McKenna Acapulco Cliff Diver
AW M. McKenna Brazilian Bikini
HM B. Kramer Great Arizona View
HM G. McKenna Tango in Buenos Aires

Print Evaluation Statistics

Class	Entries	AWs	HMs
B	2	50%	50%
A	14	21%	50%
AA	20	60%	30%
Total	36	44%	38%